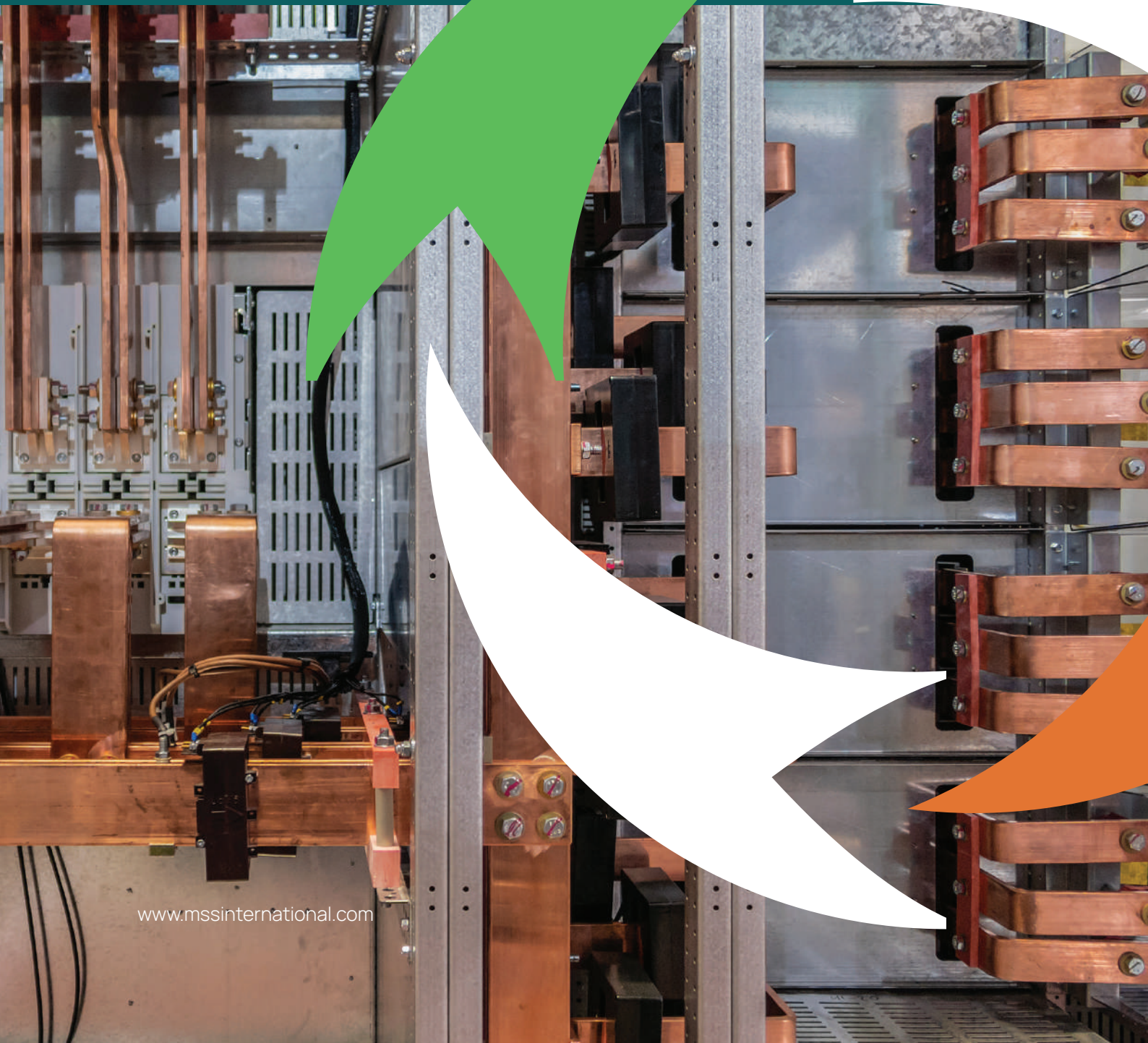




MSS
INTERNATIONAL



www.mssinternational.com



Our Mission is to be recognized as the most trusted partner in advancing the electrification of the world for a sustainable future.



Company Profile

With a history dating back over 50 years, MSS International leads the way in providing high quality components and assemblies for the global power industry.

In conjunction with our four state-of-the-art manufacturing facilities in India, our recently constructed manufacturing plant in Poland along with our Global SBU's (Strategic Business Units) located in UK, Berlin, France, and USA, we can provide an extensive robust, sustainable, global distribution supply chain!

MSS International continuously strives to add value through our dedicated R&D facilities, production innovation and a robust quality control department.



Quality Assurance

The MSS subsidiaries are ISO 9001, ISO 14001, ISO 45001 and ISO 27000 (IT) approved organisations and implement 6Sigma throughout all of their internal operations.

We are also a IAF 16949 certified company, demonstrating our commitment to quality products, services and best practice. We are regularly recognised and awarded by our global partners. Recently, MSS has also been evaluated and validated ISO 26000, Social Responsibility.

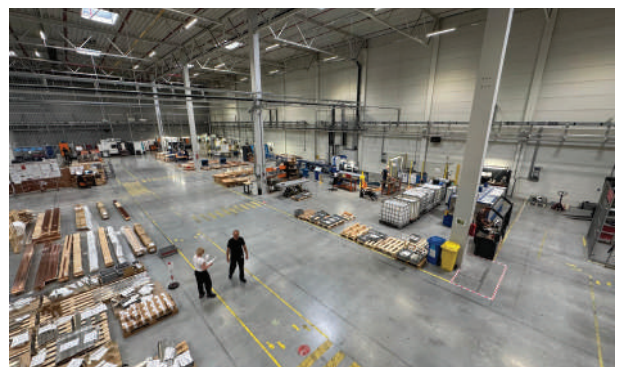


Partnership and Collaboration

Our Vision

We are committed to being an industry leader in the supply of products and services in support of the Energy Transition by:

1. Providing innovative value-added solutions and services to ensure a flawless start-up and efficient operation of our customers' electrical installations.
2. Consistently meeting and surpassing our customers' expectations in terms of quality and supply reliability.
3. Offering development opportunities to our employees through skills enhancement and a commitment to learning, fostering an empowered workforce.
4. Establishing world-class operations with industry-leading process management in all disciplines, regularly practiced.
5. Contributing as a role model to the global energy transition as well as to a responsible and sustainable environment.
6. Making a positive contribution to our stake holders and communities.



State of the Art Manufacturing Facilities

\$20m+

Over \$20m invested in new
plant & machinery since 2019



Investing in Machinery

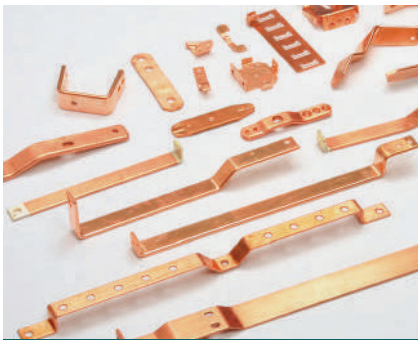
The aim of MSS International's Quality Assurance Systems is to ensure customer satisfaction at all stages. With regular investments in quality equipment and tools, our customers can be assured of the highest quality production processes in the market.

- Spectrometer for Chemical Analysis of raw material
- Two XRF double layer plating thickness testers
- Conductivity/Resistance meter – Fischer scope
- Micro hardness testing machine
- Roughness measuring machines
- Tensile testing machine
- Vision scope for reverse engineering & development

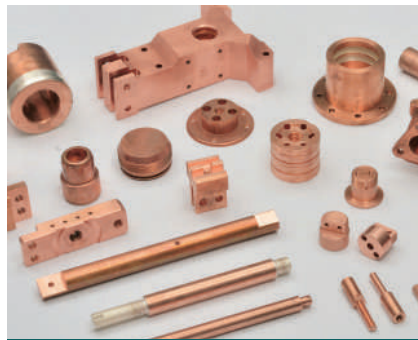


Components Overview

Our sophisticated machinery allows us to produce extremely accurate and complex components in ETP Copper, Copper Alloys, Aluminium or Brass. Our components can be supplied natural, plated (tin, lead, nickel, silver), brazed, sleeved or coated.



Pressed and Stamped Parts



Machine Parts



Forged Parts



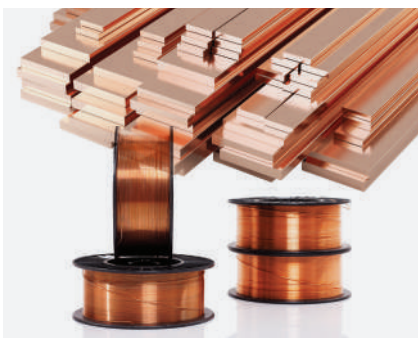
3D Bent Parts



Sleeved and Coated Parts



Laminated Flexible Parts



Copper Raw Materials



OPzV and OPzS Battery Pillars



Lead-acid Battery Connectors and Accessories

Enhancing Supply Chain Performance

From our facilities in India and Poland, we develop, manufacture and supply a wide range of components, sub-assemblies and assemblies for different applications, adding value to our customers supply chains. From raw materials to finished goods, we support your projects at any stage of the sourcing process.

At MSS we understand the constraint of time, quality and cost, hence we decided to support our customers in providing cost saving and working capital release by supplying complete solutions.

MSS has historical relations and exclusivity contracts with raw material manufacturers, this combined with other long-term collaboration in place for components, we provide an outstanding competitiveness for your needs.



Quality value engineering

- Over 50 years of experience
- Fully managed supply chain
- Consolidate your supplier base
- One Contact
- One Purchase Order
- One Invoice
- Increase your inhouse productivity and output
- Release your working capital
- MSS provides you cost savings



Value added activities include

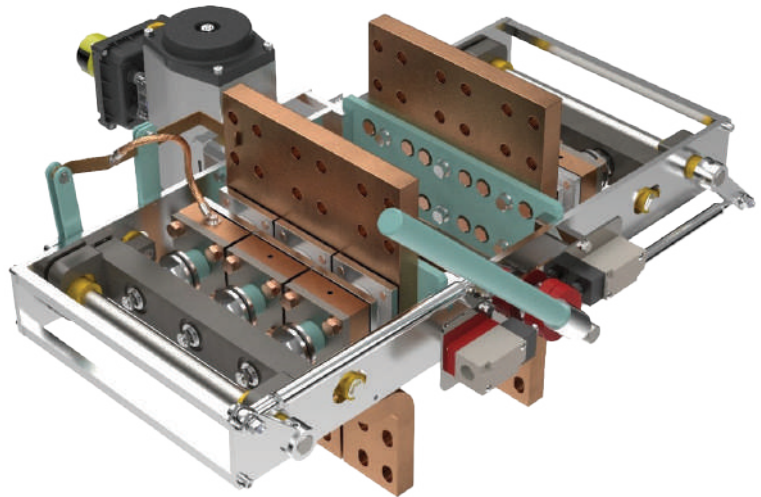
- Supply Sub and Complete Assemblies
- Product Conversion
- Design Enhancements
- Process Optimisation
- Collaborative Design Improvements
- Partial Plating



Capabilities in Engineering and Scalable Production

In addition to make-to drawing production, and thanks to our qualified engineering team, we support our customers in the design and the testing of their final assemblies:

- Design support
- Full design build
- Simulation
- Testing
- Commissioning
- Staff training



With a fleet of over 100 advanced machines, MSS delivers thousands of high-quality copper components every week – expertly pressed, stamped, forged, and machined – then seamlessly assembled and distributed to meet our clients' exacting standards.

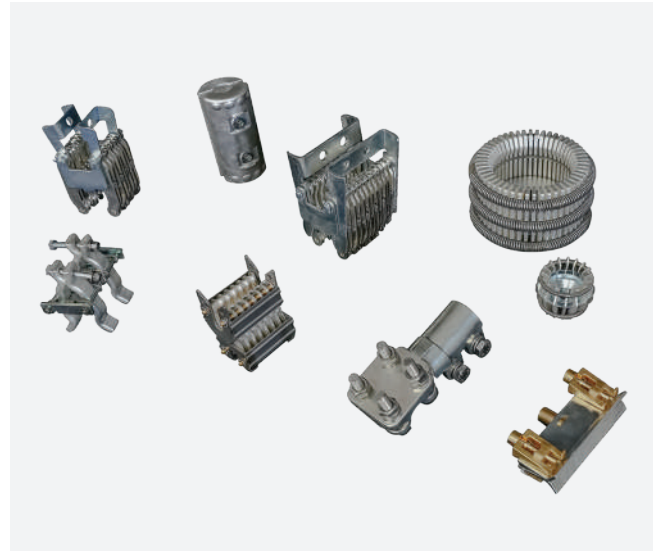
We assemble hundreds of assemblies per day in a dedicated area with over 4,000 sq m of space containing the necessary equipment from assembly process to final packing.



Bespoke Assemblies and Sub-Assemblies

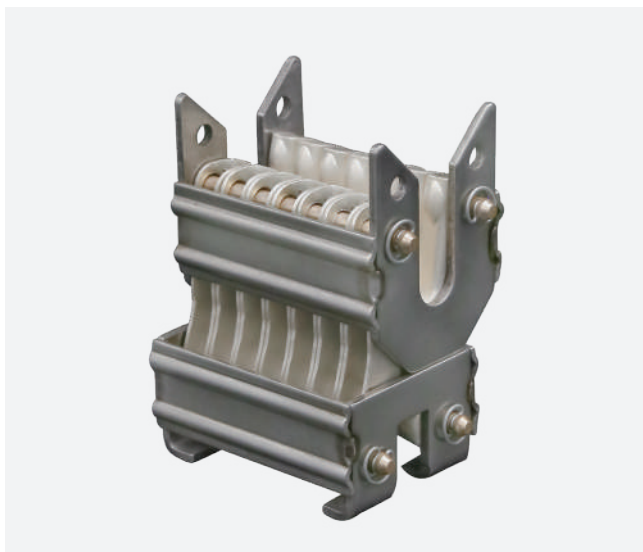


MSS provides both partial and fully assembled components for integration into larger finished products. Our streamlined sourcing and manufacturing capabilities offer a comprehensive solution for partners aiming to lower operational costs.

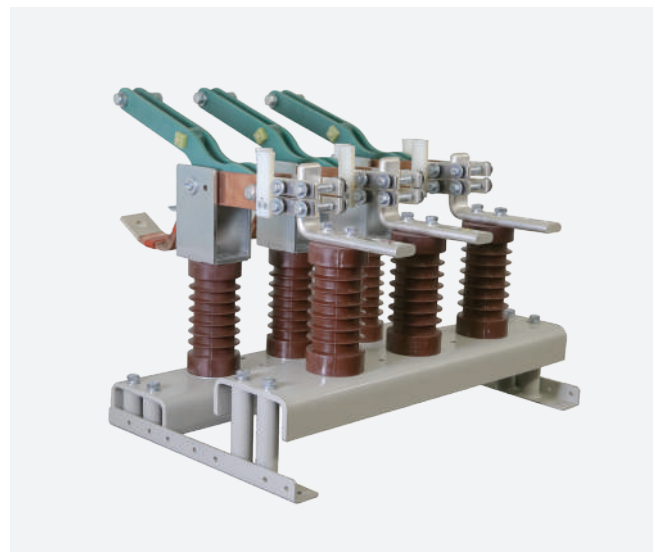


Tulip Clusters and Finger Contact Assemblies

MSS's Assembly Team has extensive experience working with brass, steel, and glass fiber components, alongside our in-house manufactured copper and aluminium parts.



Finger Contacts



DC Switches



G Corner Electrical Systems, part of MSS International

G Corner specializes in the design, development, manufacture, and installation of a wide range of custom busbar systems and complete assemblies for applications including electro-refining and electro-winning of base metals, chlorine production, and green hydrogen generation.

From feasibility studies to system commissioning, G Corner, a division of MSS International, provides comprehensive project support. Over time, we've expanded our presence into specialized industrial markets. Our current capabilities include:

Copper Materials

Copper and Aluminium DC Busbar Systems

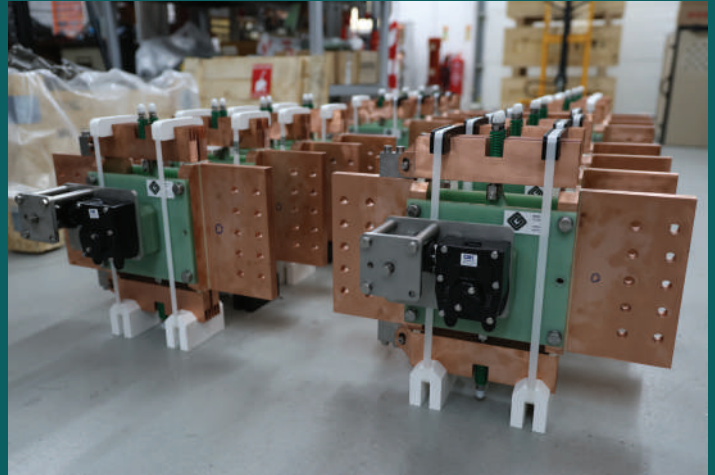
DC Disconnectors

DC Isolators

High Current DC Switches

Copper Machined Busbars

Laminated/Braided Flexibles



At G Corner, a division of MSS International, we prioritize user-centered, functional, cost-effective, and safe product design. By leveraging advanced design, simulation, and testing techniques, our engineering team transforms concepts into reality; drawing on expertise in mechanical, electrical, software, and systems engineering to ensure both performance and manufacturability.



At MSS International, smart design is at the heart of everything we do. We create user-focused, functional, and cost-effective solutions that never compromise on safety. Powered by our Elmecons division, our engineering team transforms ideas into market-ready products, combining cutting-edge design, simulation, and testing with deep expertise in mechanical, electrical, software, and systems engineering. The result? High-performance, manufacturable solutions that deliver real value.

Sales, Manufacturing and Distribution Locations



Manufacturing & Distribution

- | | |
|-----------|---------------------|
| 📍 India | 📍 UK |
| 📍 Poland | 📍 USA - East & West |
| 📍 Germany | 📍 France |

Sales & Service

- | | | |
|-----------|------------|-------------|
| 📍 India | 📍 UK | 📍 Spain |
| 📍 Poland | 📍 USA | 📍 Japan |
| 📍 Germany | 📍 Thailand | 📍 France |
| 📍 Italy | 📍 Chile | 📍 Australia |





Notes





MSS International (HQ)

Tel: +44 (0)161 703 9990
Email: enquiries@mssinternational.com
Website: www.mssinternational.com
Linkedin: www.linkedin.com/company/mss-international-limited